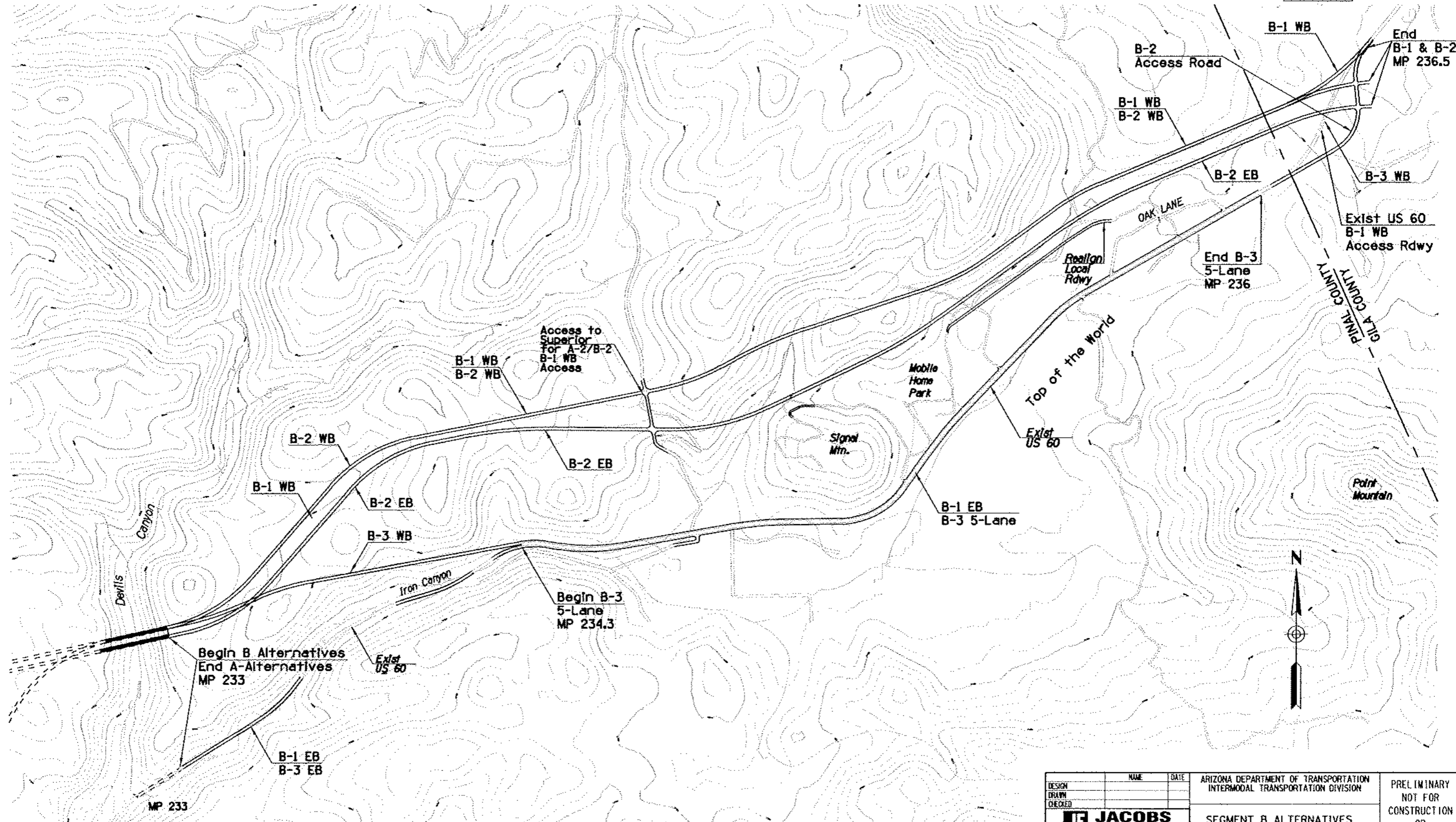


F.L.R.A. REGION	STATE	PROJECT NO.	SHEET NO.	TOTAL SHEETS	AS BUILT
9	ARIZ.		36		

60 GI 227



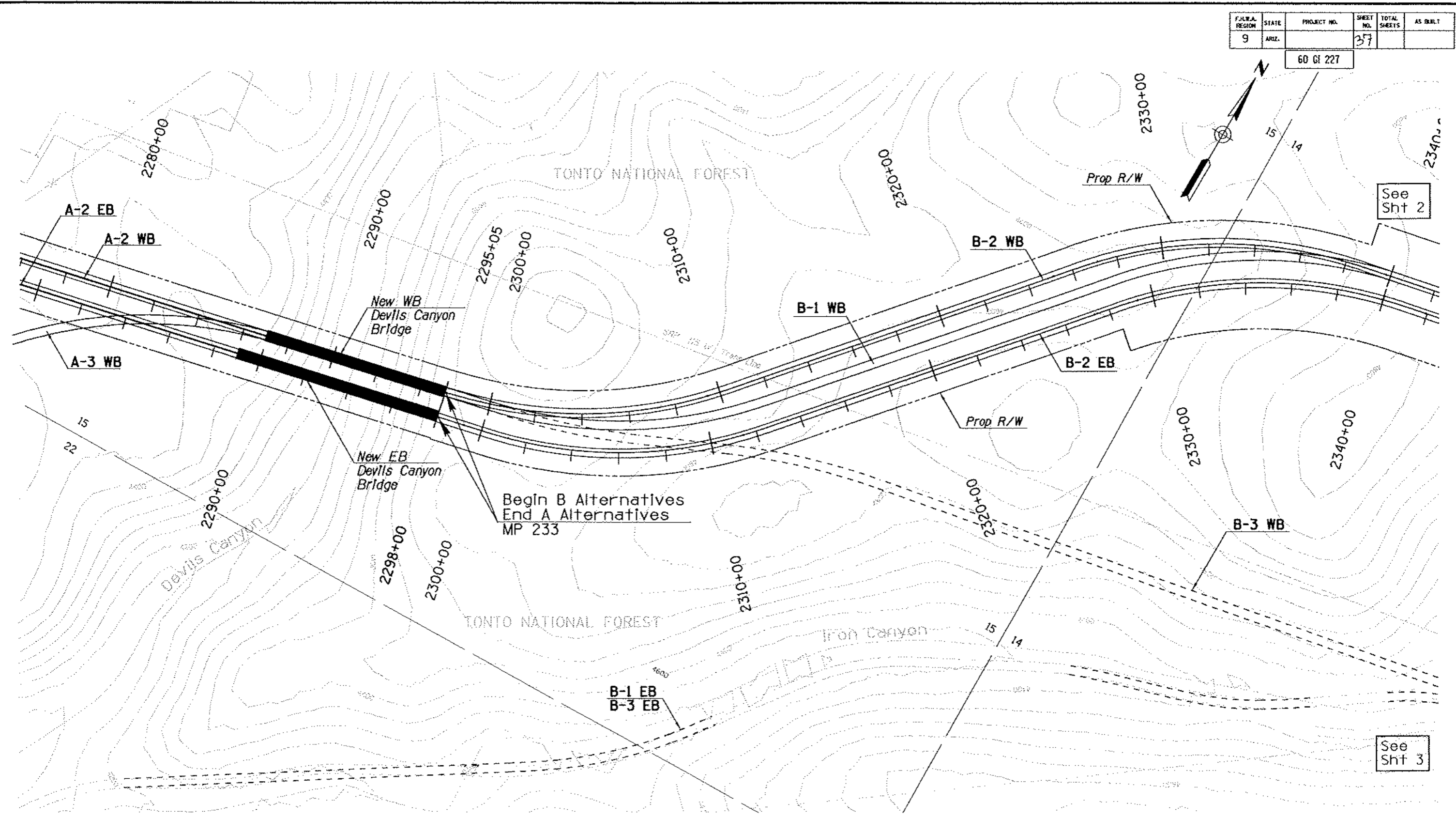
Plotted By: JCS/... Date: 10-09-2004 17:34
 File: F:\014191\3088 US 60 Superior to Globe\00C\01\7022\CVIL\7022\001\segmentB.dwg

DATE	REVISIONS	LOCATION

DESIGN	NAME	DATE	ARIZONA DEPARTMENT OF TRANSPORTATION INTERMODAL TRANSPORTATION DIVISION	PRELIMINARY NOT FOR CONSTRUCTION OR RECORDING
DRAWN				
CHECKED			SEGMENT B ALTERNATIVES	SHEET 1 OF 1
ROUTE	LOCATION			
US 60	SUPERIOR - GLOBE			
TRACS NO. H 5160 01 L				

F.H.W.A. REGION	STATE	PROJECT NO.	SHEET NO.	TOTAL SHEETS	AS BUILT
9	ARIZ.		37		

60 GI 227



See Sht 2

See Sht 3

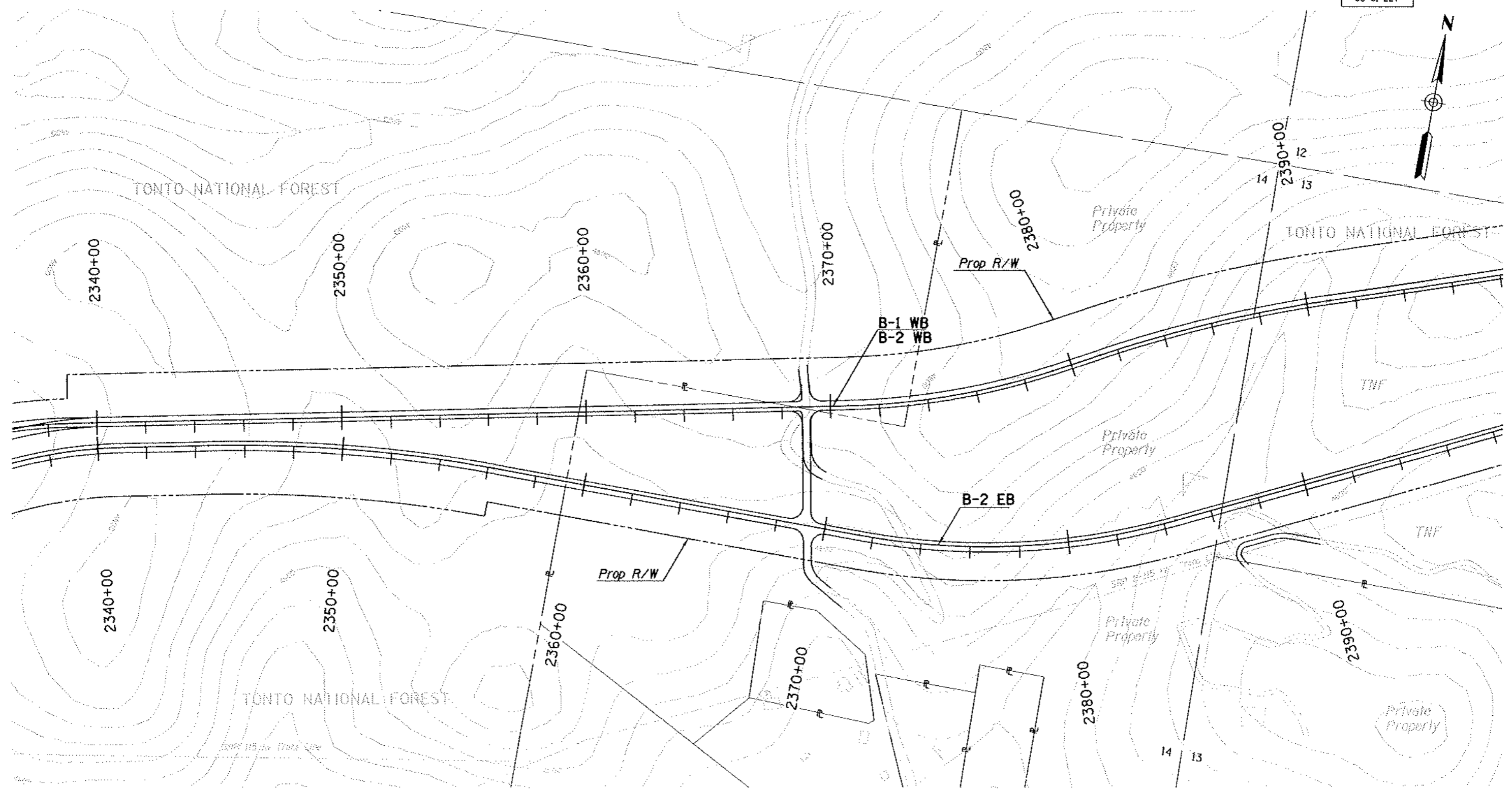
Plotted by: vj350+ Date: 18-NOV-2004 17:46
 File: P:\204159\3000 US 60 Superior to Globe\702\CIVIL\702A00\1\235-148.dgn

DATE	REVISIONS	LOCATION

DESIGN	NAME	DATE	ARIZONA DEPARTMENT OF TRANSPORTATION INTERMODAL TRANSPORTATION DIVISION	PRELIMINARY NOT FOR CONSTRUCTION OR RECORDING
DRAWN CHECKED				
			ALTERNATIVES B-1 & B-2	SHEET 1 OF 5
ROUTE	LOCATION			
US 60	SUPERIOR - GLOBE			
TRACS NO. H 5160 01 L				OF

F.H.W.A. REGION	STATE	PROJECT NO.	SHEET NO.	TOTAL SHEETS	AS BUILT
9	ARIZ.		38		

60 CI 227



Note: For Alt B-1 EB
See Sheet 3

DATE	LOCATION	REVISIONS

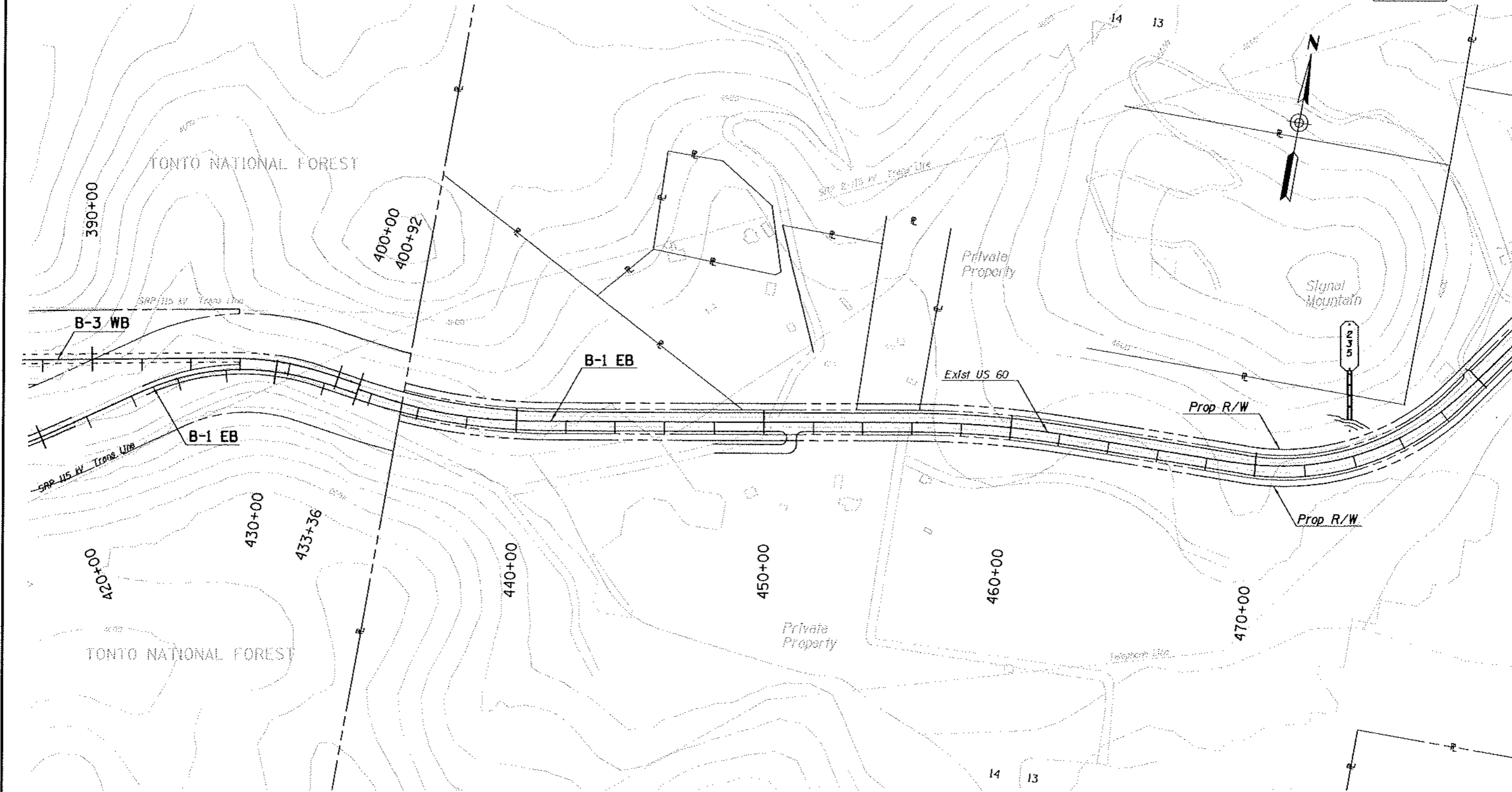
Plotted By: +USER+ Date: 18-NOV-2004 17:29
 File: P:\21415\3000 US 60 Superior to Globe\700\000\702\CIVIL\702A00M\34B-m102.dwg

DESIGN	NAME	DATE	ARIZONA DEPARTMENT OF TRANSPORTATION INTERMODAL TRANSPORTATION DIVISION	PRELIMINARY NOT FOR CONSTRUCTION OR RECORDING
DRAWN				
CHECKED			ALTERNATIVES B-1 & B-2	
ROUTE		LOCATION		SHEET 2 OF 5
US 60		SUPERIOR - GLOBE		
TRACS NO. H 5160 01 L				OF



F.H.L.A. REGION	STATE	PROJECT NO.	SHEET NO.	TOTAL SHEETS	AS BUILT
9	ARIZ.		39		

60 GI 227



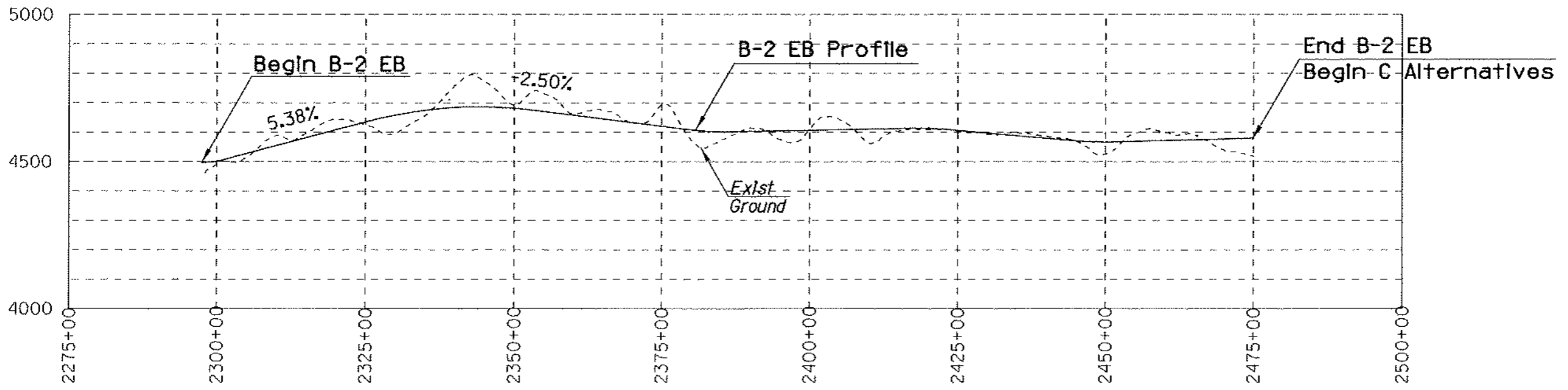
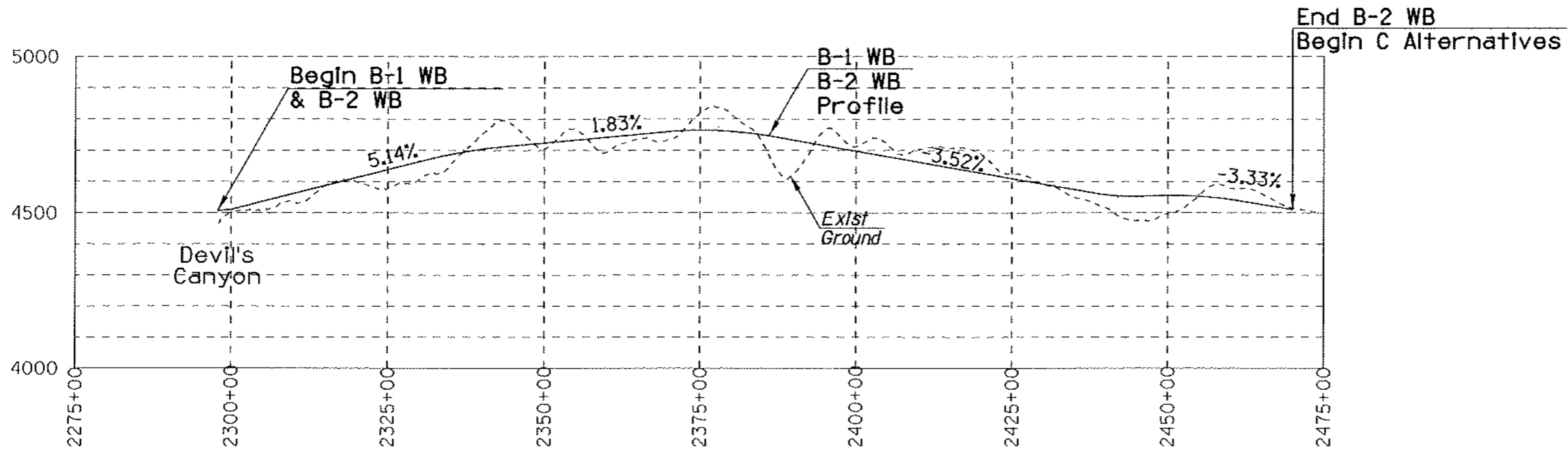
Plotted By: ***SEC*** Date: 10-NOV-2004 17:10
 File: P:\014191\3000 US 60 Superior to Globe\60\ACQ\227\CIVIL\782460\01\393-sh02.dgn

SHEET NO.	REVISED PLANS	REVISIONS	LOCATION	DATE

DESIGN	NAME	DATE	ARIZONA DEPARTMENT OF TRANSPORTATION INTERMODAL TRANSPORTATION DIVISION	PRELIMINARY NOT FOR CONSTRUCTION OR RECORDING
DRAWN				
CHECKED			ALTERNATIVE B-1 & B-2	
ROUTE	LOCATION		US 60	SUPERIOR - GLOBE
TRACS NO. H 5160 01 L				SHEET 3 OF 5
				OF

F.J.A.A. REGION	STATE	PROJECT NO.	SHEET NO.	TOTAL SHEETS	AS BUILT
9	ARIZ.		42		

60 GI 227



Plotted By: rj3320 Date: 18 NOV 2004 17:14
 File: F:\0415\1000 US 60 Superior to Globe\7862\CIVIL\7824\CON\Figure4-12B-2.dgn

DATE	REVISIONS	LOCATION

DESIGN	NAME	DATE	ARIZONA DEPARTMENT OF TRANSPORTATION INTERMODAL TRANSPORTATION DIVISION	PRELIMINARY NOT FOR CONSTRUCTION OR RECORDING
DRAWN				
CHECKED	JACOBS CIVIL INC.		ALTERNATIVE BB-1 & B-2 MAJOR VERTICAL FEATURES	SHEET 1 OF 1
ROUTE	LOCATION	SUPERIOR - GLOBE		
US 60	TRACS NO. H 5160 01 L			OF