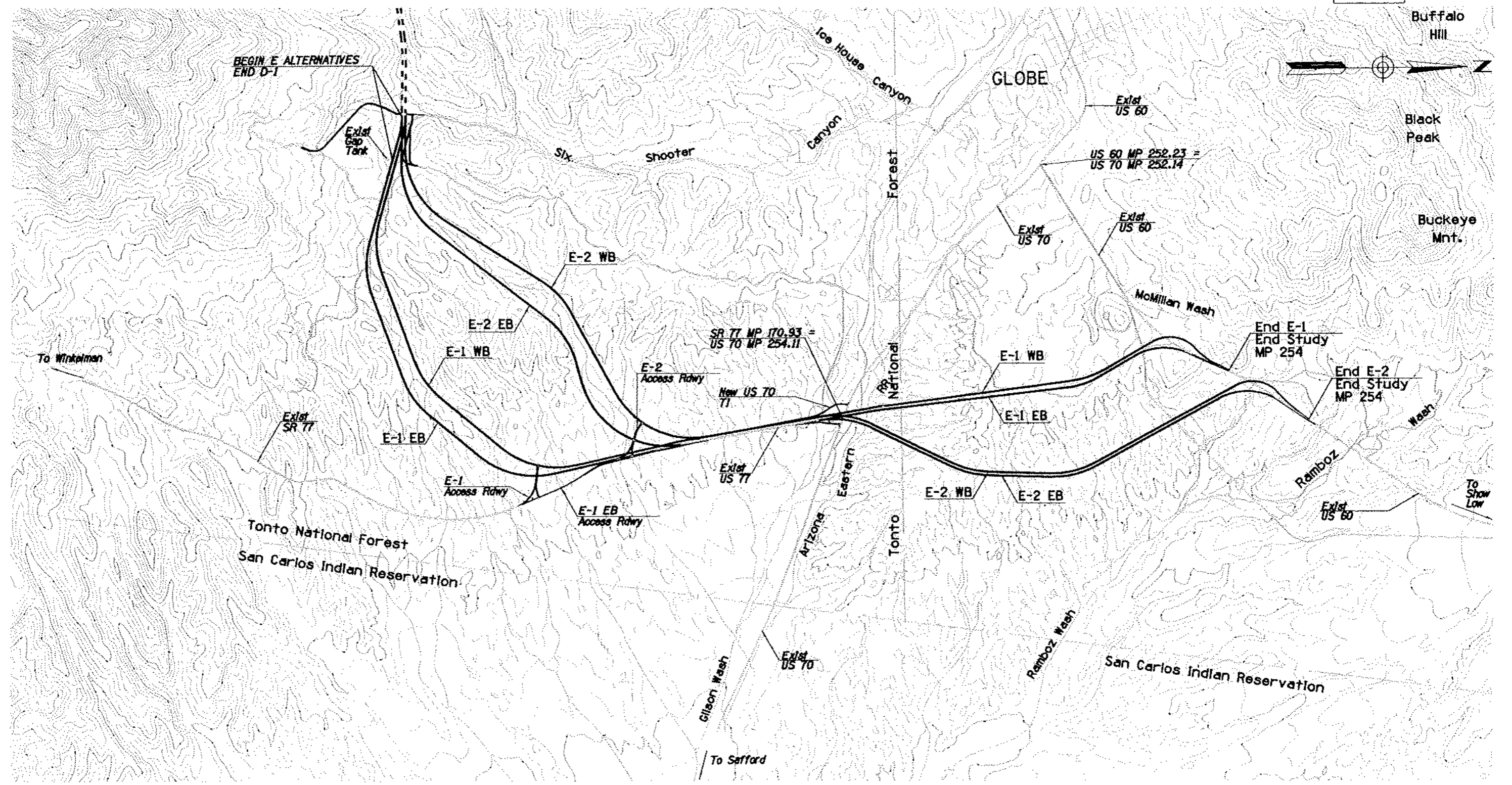


F.L.R.A. REGION	STATE	PROJECT NO.	SHEET NO.	TOTAL SHEETS	AS BUILT
9	ARIZ.		71		

60 GI 227



Plotted By: JESR Date: 18-NOV-2004 17:55  
 File: P:\14159\3008 US 60 Superior to Globe\700\600\202\CIVIL\702\600\VEG\main.dwg

DATE	LOCATION	REVISIONS	FINISHED PLANS	SURVEY NO.

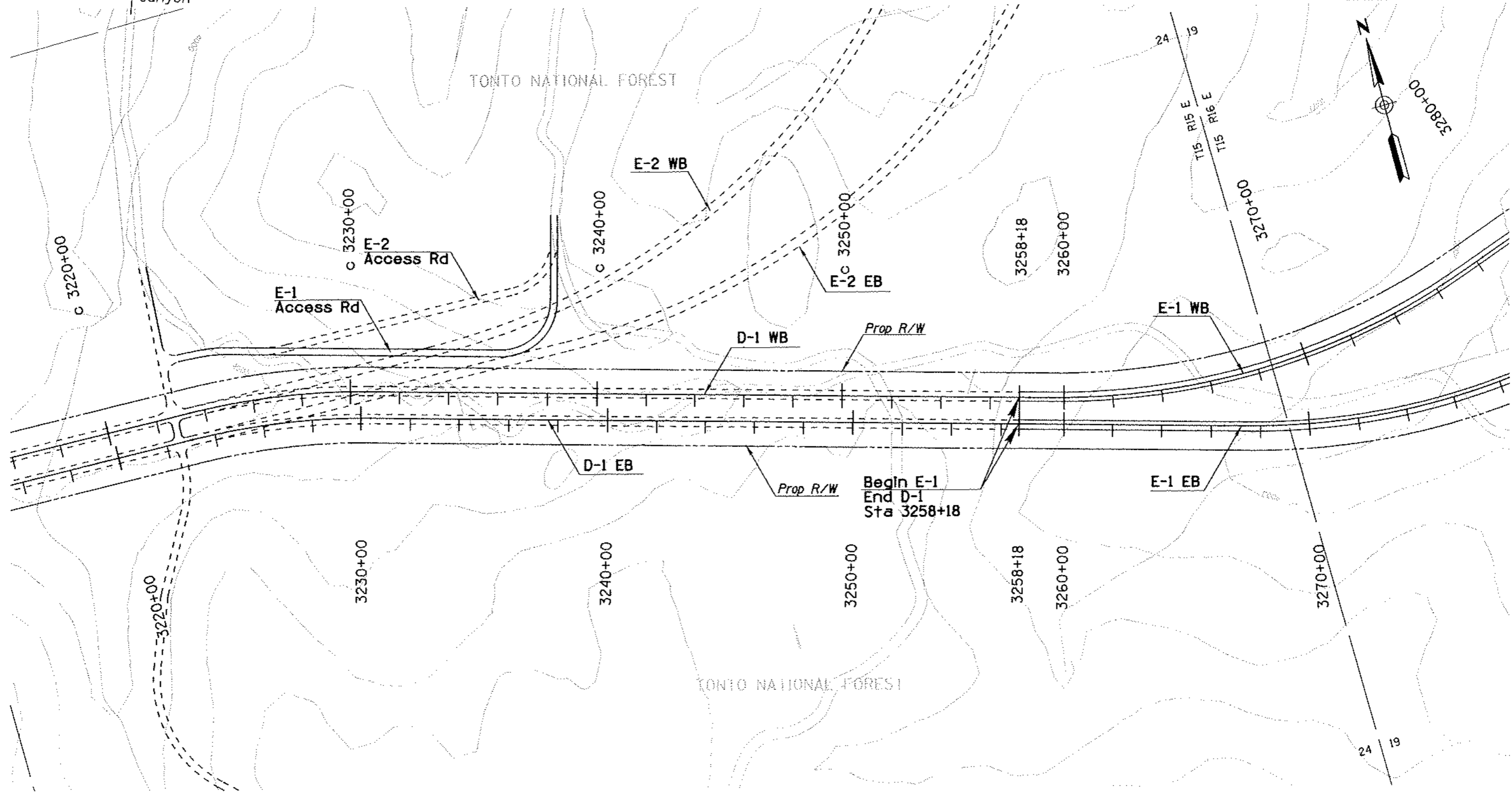
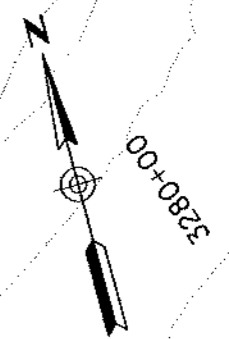
DESIGN	NAME	DATE	ARIZONA DEPARTMENT OF TRANSPORTATION INTERMODAL TRANSPORTATION DIVISION	PRELIMINARY NOT FOR CONSTRUCTION OR RECORDING SHEET 1 OF 1
DRAWN			SEGMENT E ALTERNATIVES	
CHECKED				
ROUTE	LOCATION	US 60 SUPERIOR - GLOBE		
TRACS NO. H 5160 01 L				

FEDERAL REGION	STATE	PROJECT NO.	SHEET NO.	TOTAL SHEETS	AS BUILT
9	ARIZ.		75		

60 GI 227

To Six Shooter Canyon

TONTO NATIONAL FOREST



Plotted By: JES/... Date: 12-10-2004 17:58  
 File: P:\14159\3000 US 60 Superior to Globe\788CAD01\2221\178240001\021-an1.dgn

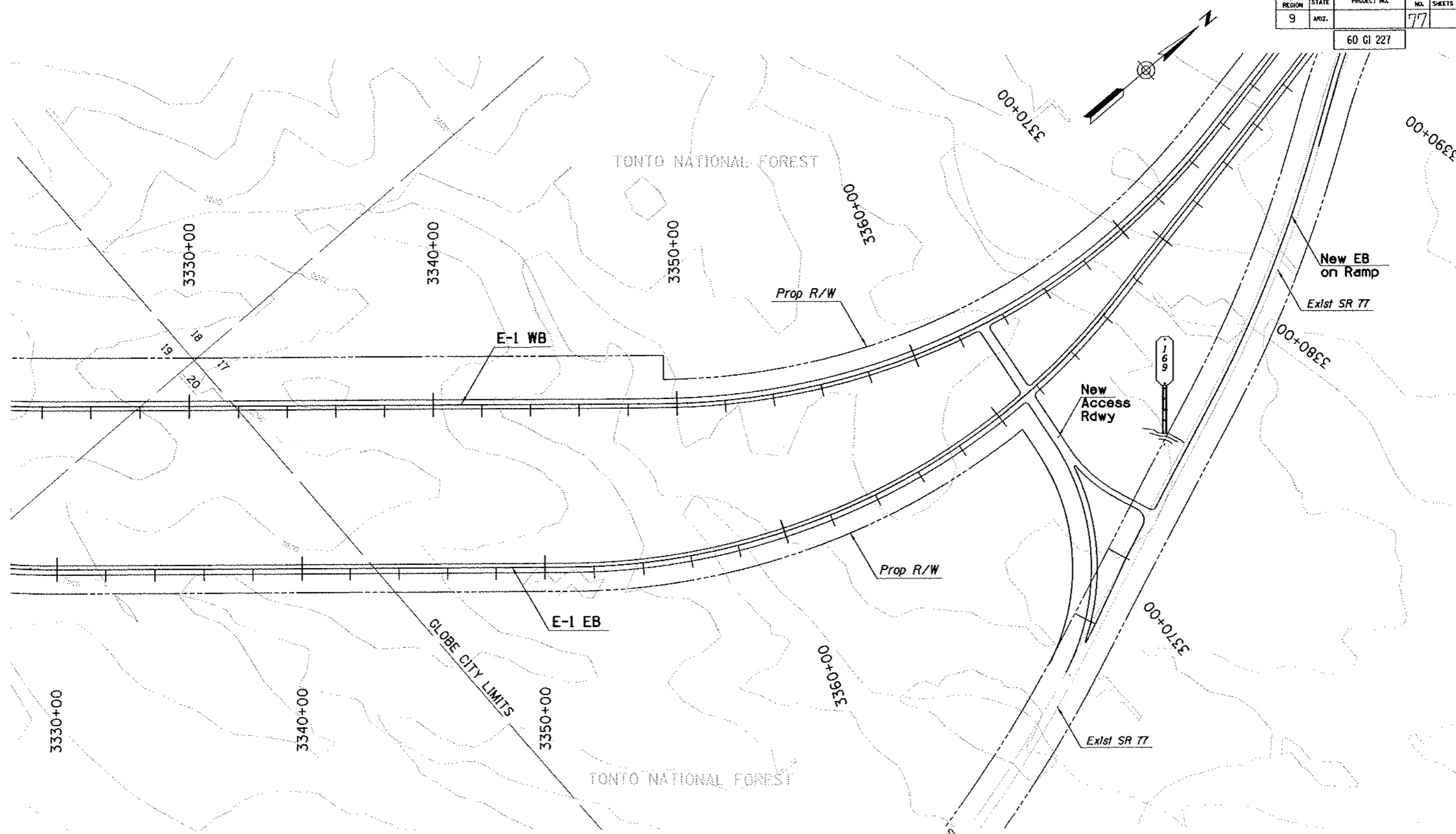
DATE	LOCATION	REVISIONS

DESIGN	NAME	DATE	ARIZONA DEPARTMENT OF TRANSPORTATION INTERMODAL TRANSPORTATION DIVISION	PRELIMINARY NOT FOR CONSTRUCTION OR RECORDING
DRAWN			ALTERNATIVE E-1	
CHECKED				SHEET 1 OF 7
			ROUTE US 60 LOCATION SUPERIOR - GLOBE	
TRACS NO. H 5160 01 L			OF	



F.H.R.A. REGION	STATE	PROJECT NO.	SHEET NO.	TOTAL SHEETS	AS BUILT
9	ARIZ.		77		

60 GI 227



Plotted By: r1561 Date: 10-NOV-2004 10:00  
 File: P:\01419\3088 US 60 Superior to Globe\00\400\202\01\782400M\02E1-ar1.dgn

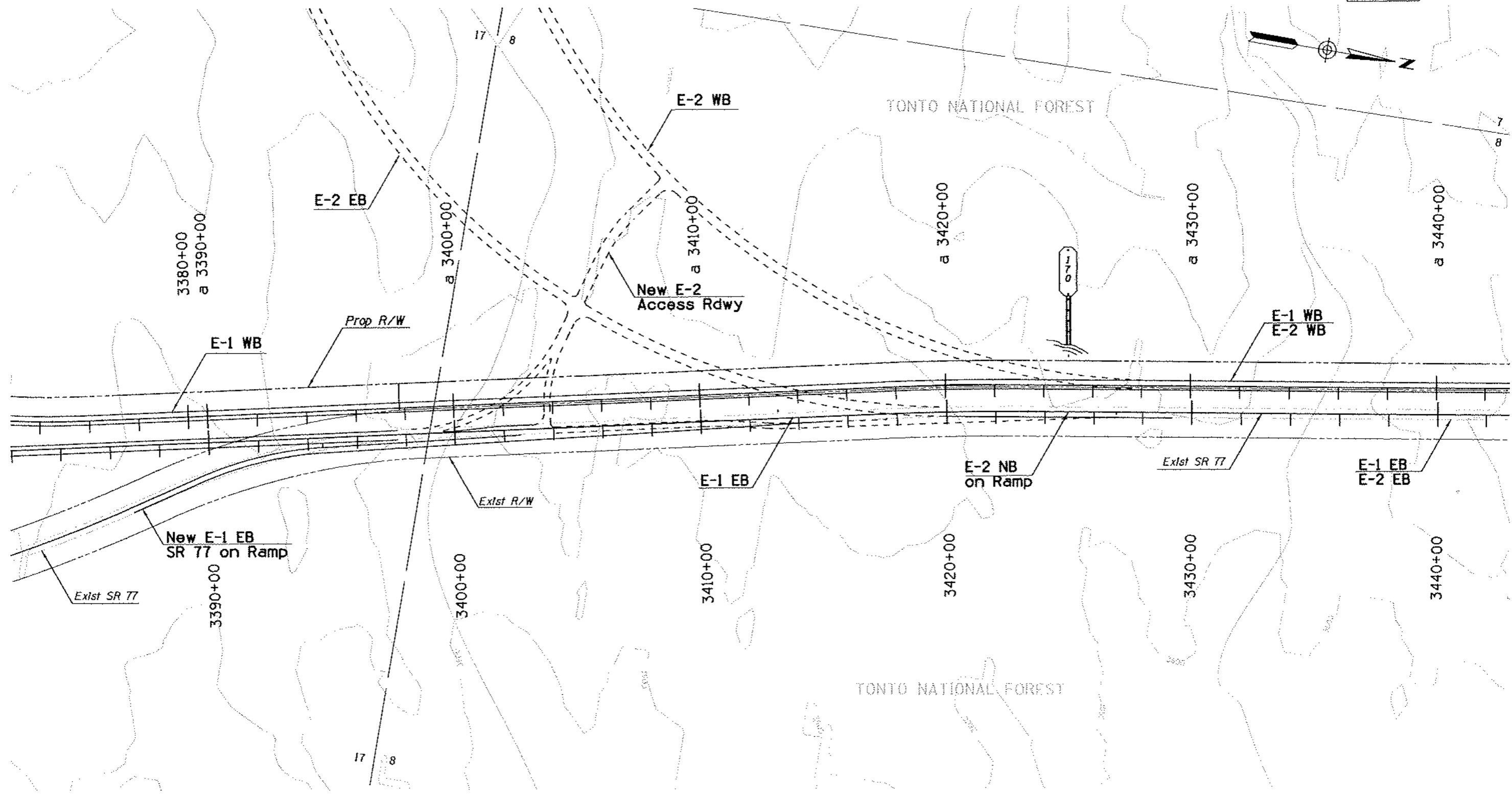
NO.	DATE	REVISIONS	LOCATION

DESIGN	NAME	DATE	ARIZONA DEPARTMENT OF TRANSPORTATION INTERMODAL TRANSPORTATION DIVISION	PRELIMINARY NOT FOR CONSTRUCTION OR RECORDING
DRAWN				
CHECKED			ALTERNATIVE E-1	SHEET 3 OF 7
ROUTE	LOCATION	SUPERIOR - GLOBE		
US 60	TRACS NO. H 5160 01 L			OF

To Winkelman

F.A.R.A. REGION	STATE	PROJECT NO.	SHEET NO.	TOTAL SHEETS	AS BUILT
9	ARIZ.		78		

60 GI 227



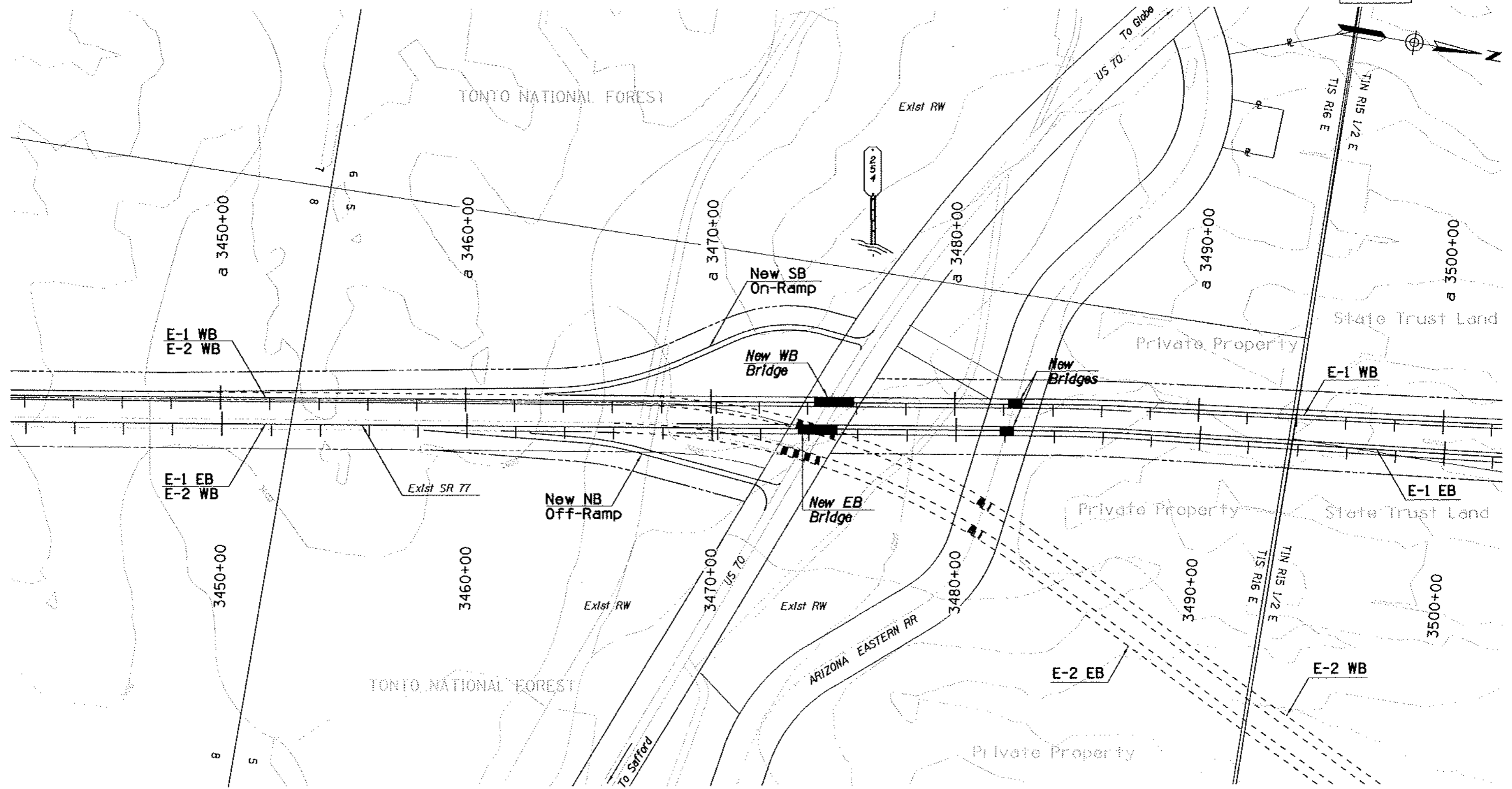
Plotted By: JWB Date: 10-NOV-2004 16:21  
 File: P:\181619\3800 US 60 Superior to Globe\7802\00\78020001.dgn

NO.	REVISIONS	LOCATION	DATE

DESIGN	NAME	DATE	ARIZONA DEPARTMENT OF TRANSPORTATION INTERMODAL TRANSPORTATION DIVISION	PRELIMINARY NOT FOR CONSTRUCTION OR RECORDING
DRAWN				
CHECKED			ALTERNATIVE E-1	SHEET 4 OF 7
ROUTE	LOCATION	SUPERIOR - GLOBE		
US 60			TRACS NO. H 5160 01 L	
				OF

F.H.W.A. REGION	STATE	PROJECT NO.	SHEET NO.	TOTAL SHEETS	AS BUILT
9	ARIZ.		79		

60 GI 227



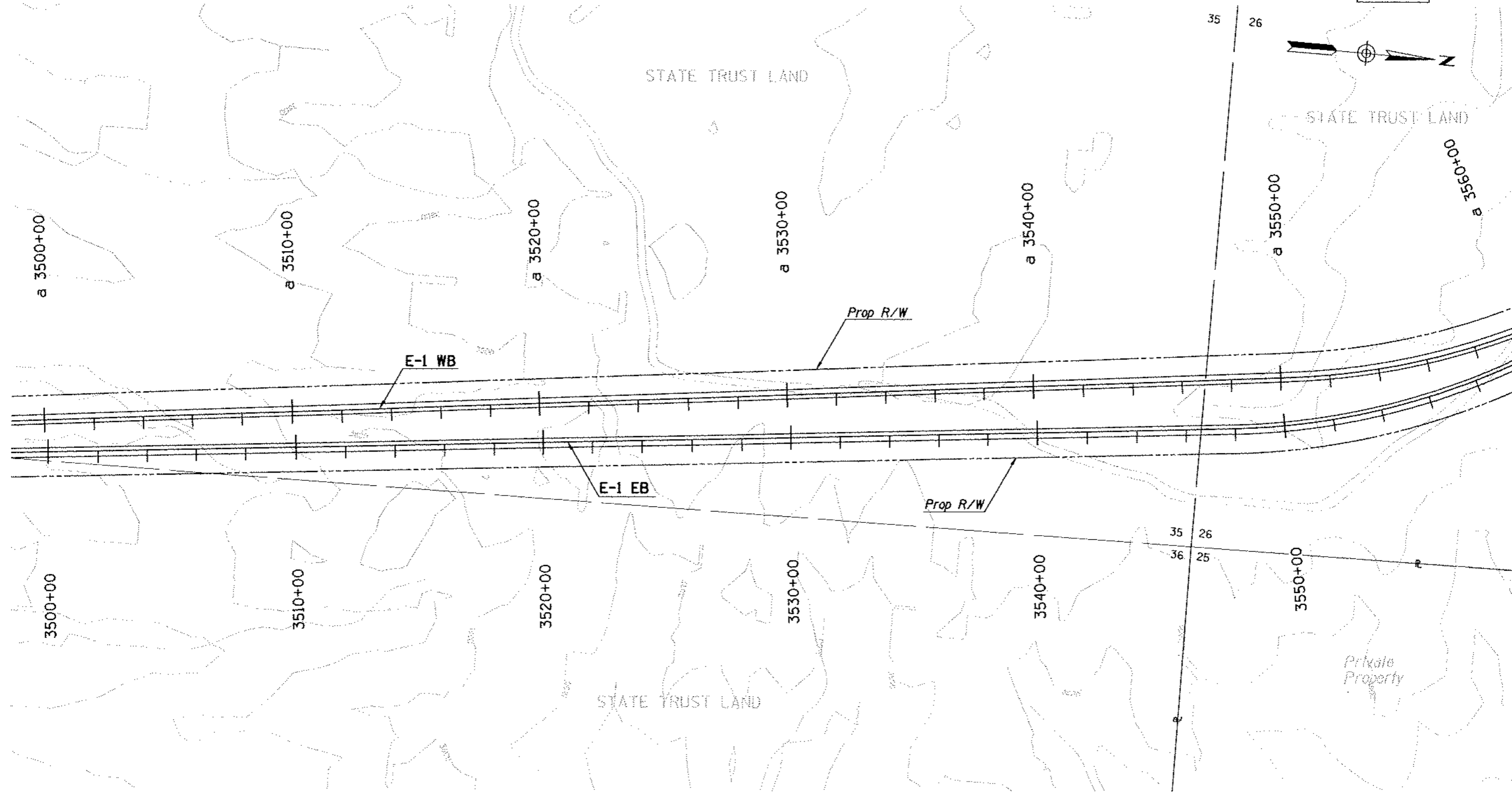
Plotted By: JUSEC+ Oester 18-NOV-2004 10:02  
 File: F:\ARIZ\91\3000 US 60 Superior to Globe\7822\1\7822\001\3451-1.kpl.dgn

DATE	LOCATION	REVISIONS

DESIGN	NAME	DATE	ARIZONA DEPARTMENT OF TRANSPORTATION INTERMODAL TRANSPORTATION DIVISION	PRELIMINARY NOT FOR CONSTRUCTION OR RECORDING
DRAWN				
CHECKED			ALTERNATIVE E-1	SHEET 5 OF 7
ROUTE	LOCATION	US 60 SUPERIOR - GLOBE		
TRACS NO. H 5160 01 L			OF	

F.H.W.A. REGION	STATE	PROJECT NO.	SHEET NO.	TOTAL SHEETS	AS BUILT
9	ARIZ.		80		

60 GI 227



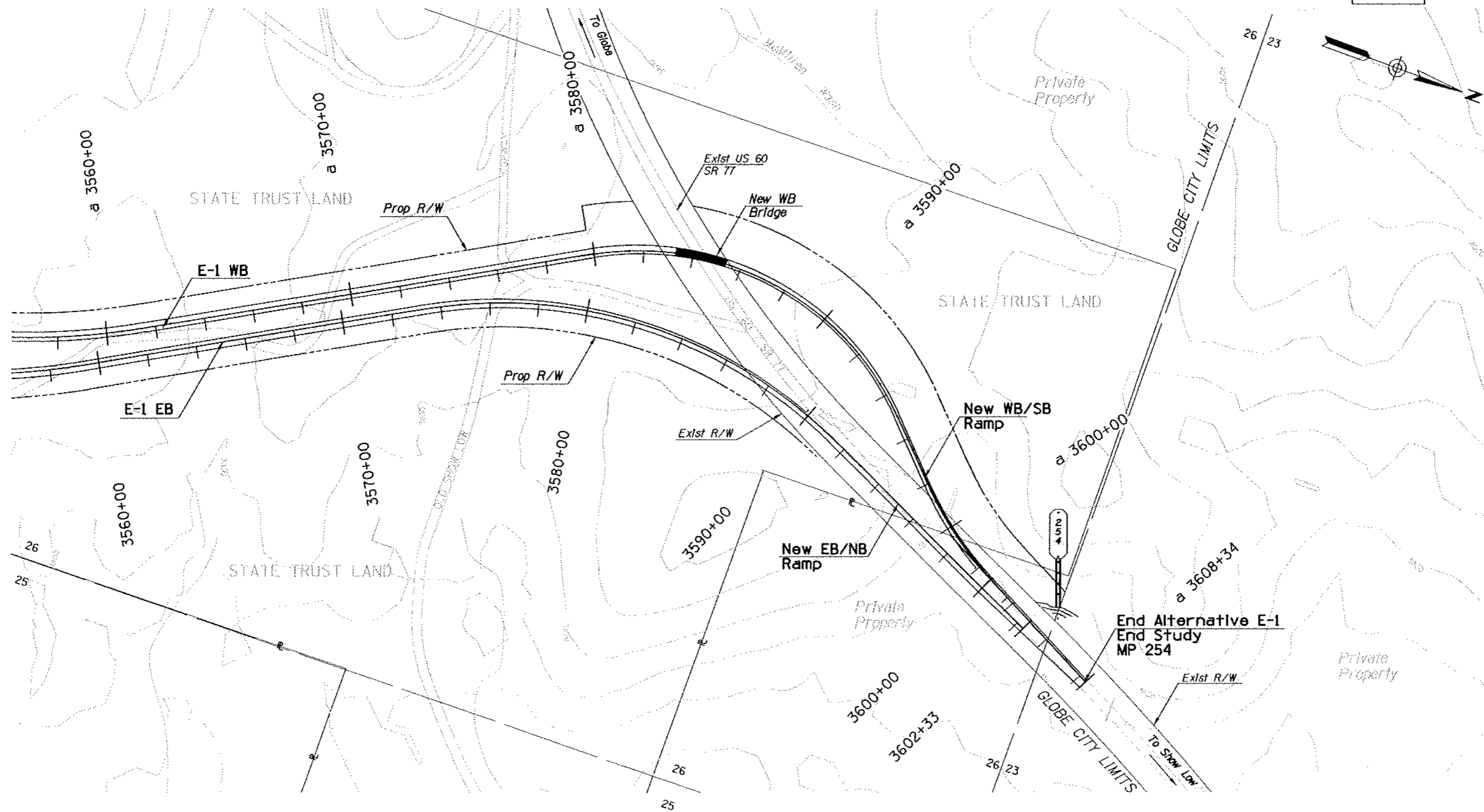
Plotted By: JES/... Date: 10-10-2004 16:03  
 File: P:\141591\3000 US 60 Superior to Globe\60GI227\02CIVL\702A00A1.CAD:ep-08.dwg

SHEET NO.	PROJECT PLANS	REVISIONS	LOCATION	DATE

DESIGN	NAME	DATE	ARIZONA DEPARTMENT OF TRANSPORTATION INTERMODAL TRANSPORTATION DIVISION	PRELIMINARY NOT FOR CONSTRUCTION OR RECORDING
DRAWN CHECKED				
<b>JACOBSON CIVIL INC.</b>			ALTERNATIVE E-1	SHEET 6 OF 7
ROUTE	LOCATION			
US 60	SUPERIOR - GLOBE			
TRACS NO. H 5160 01 L				OF

F.A.R.A. REGION	STATE	PROJECT NO.	SHEET NO.	TOTAL SHEETS	AS BUILT
9	ARIZ.		21		

60 GI 227



Plotted By: \*\*GSR\*\* Date: 19-NOV-2004 15:44  
 File: P:\214195\3000 US 60 Superior to Globe\786CAD\782E1\AL782E1.dgn

DATE	REVISIONS	LOCATION

DESIGN	NAME	DATE	ARIZONA DEPARTMENT OF TRANSPORTATION INTERMODAL TRANSPORTATION DIVISION	PRELIMINARY NOT FOR CONSTRUCTION OR RECORDING
DRAWN				
CHECKED				
<b>JACOBS CIVIL INC.</b>			ALTERNATIVE E-1	
ROUTE	LOCATION	SUPERIOR - GLOBE		SHEET 7 OF 7
TRACS NO. H 5160 01 L				OF