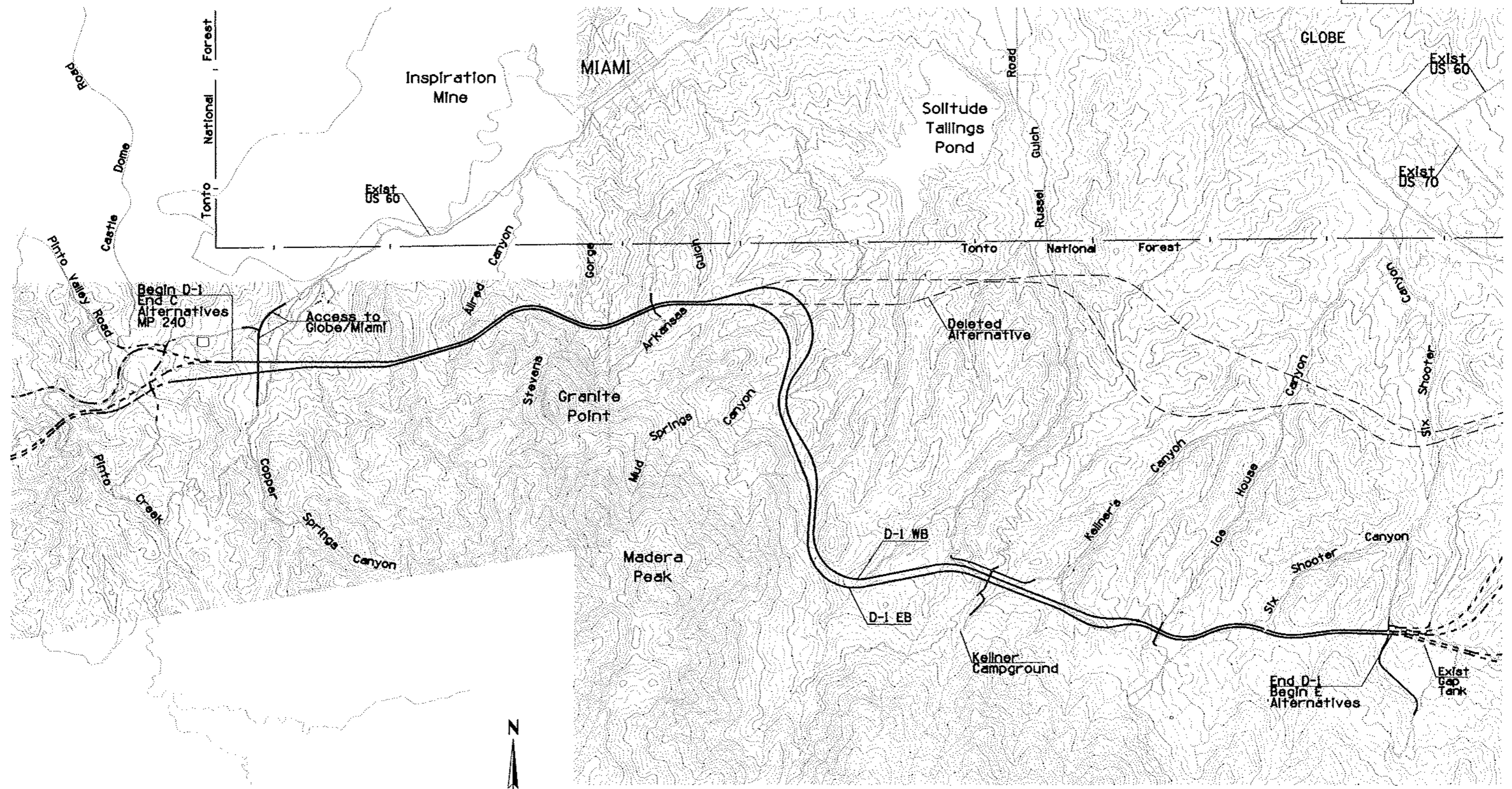


F.A.R.A. REGION	STATE	PROJECT NO.	SHEET NO.	TOTAL SHEETS	AS BUILT
9	ARIZ.		59		

60 GI 227



Plotted By: \*\*USER\*\* Date: 10-NOV-2004 17:35  
 File: P:\M\459\3002 US 60 Superior to Globe\780000\7802\CIVIL\780400M\segmentd.dgn

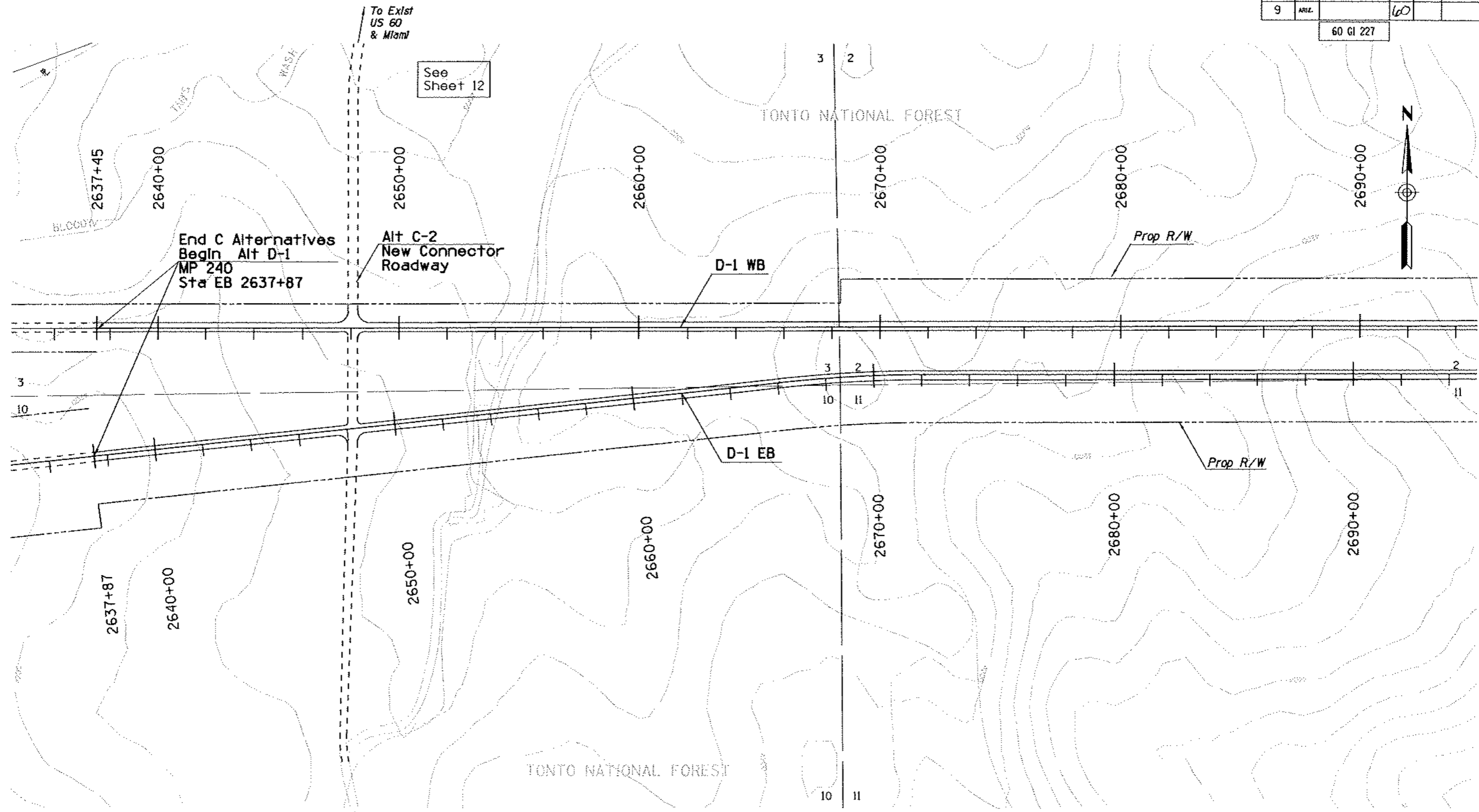
NO.	DATE	REVISIONS	LOCATION



DESIGN	NAME	DATE	ARIZONA DEPARTMENT OF TRANSPORTATION INTERMODAL TRANSPORTATION DIVISION	PRELIMINARY NOT FOR CONSTRUCTION OR RECORDING
DRAWN			SEGMENT D ALTERNATIVES	
CHECKED				
ROUTE	LOCATION			SHEET 1 OF 1
US 60	SUPERIOR - GLOBE			
TRACS NO. H 5160 01 L				OF

F.H.W.A. REGION	STATE	PROJECT NO.	SHEET NO.	TOTAL SHEETS	AS BUILT
9	ARIZ.		60		

60 GI 227



See Sheet 12

End C Alternatives  
Begin Alt D-1  
MP 240  
Sta EB 2637+87

Alt C-2  
New Connector  
Roadway

D-1 WB

Prop R/W



D-1 EB

Prop R/W

TONTO NATIONAL FOREST

To Copper Springs  
Canyon

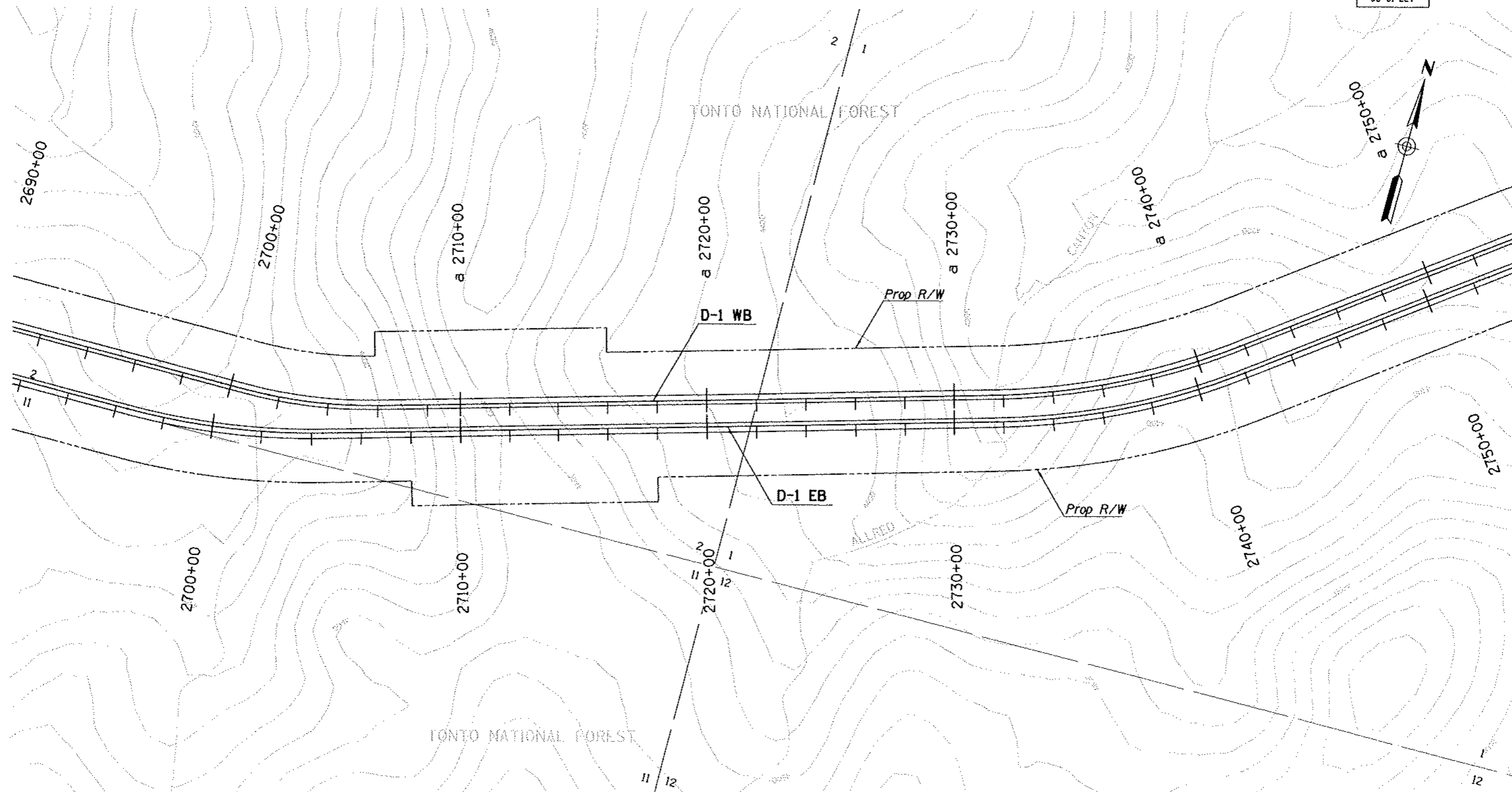
Plotted By: JISEP Date: 18 NOV 2004 17:42  
File: P:\M4391\3000 US 66 Superior to Globe\7062400\7062400.dwg

NO.	DATE	DESCRIPTION

DESIGN	NAME	DATE	ARIZONA DEPARTMENT OF TRANSPORTATION INTERMODAL TRANSPORTATION DIVISION	PRELIMINARY NOT FOR CONSTRUCTION OR RECORDING
DRAWN				
CHECKED				
<b>JACOBS CIVIL INC.</b>			ALTERNATIVE D-1	
ROUTE	LOCATION		SUPERIOR - GLOBE	SHEET 1 OF 12
US 60				OF
TRACS NO. H 5160 01 L				

F.A.R.A. REGION	STATE	PROJECT NO.	SHEET NO.	TOTAL SHEETS	AS BUILT
9	ARIZ.		61		

60 GI 22T



Plotted by: JUSEB Date: 10-NOV-2004 17:43  
 File: P:\181459\3000 US 60 Superior to Globe\706C40\702CIVIL\702A00N.vac01-ar12.dgn

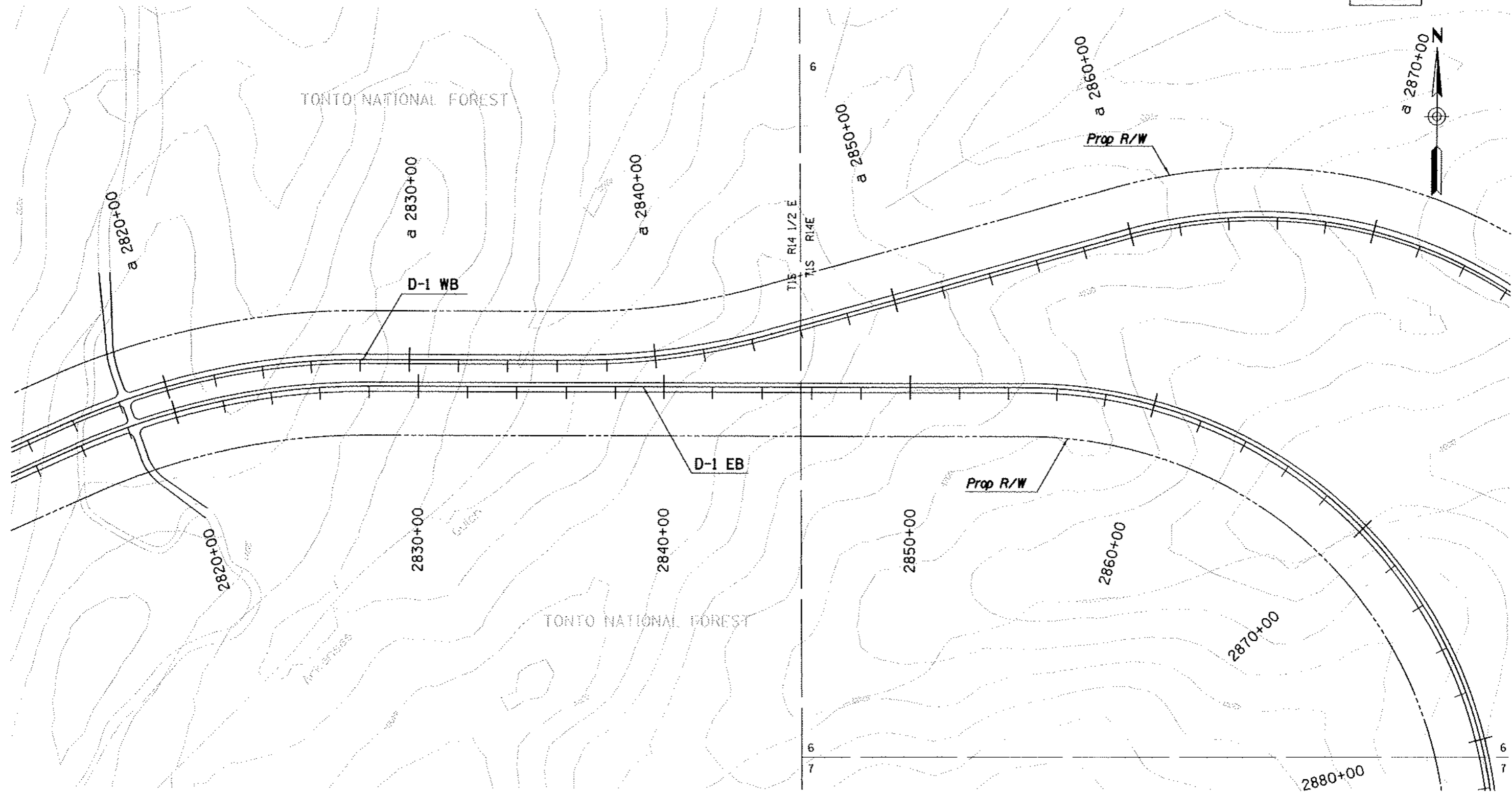
DATE	LOCATION	REVISIONS	PREPARED BY

DESIGN	NAME	DATE	ARIZONA DEPARTMENT OF TRANSPORTATION INTERMODAL TRANSPORTATION DIVISION	PRELIMINARY NOT FOR CONSTRUCTION OR RECORDING
DRAWN			ALTERNATIVE D-1	
CHECKED				
<b>JACOBSON</b> CIVIL INC.				
ROUTE	LOCATION			SHEET 2 OF 12
US 60	SUPERIOR - GLOBE			
TRACS NO. H 5160 01 L				OF



F.A.R.A. REGION	STATE	PROJECT NO.	SHEET NO.	TOTAL SHEETS	AS BUILT
9	ARIZ.		63		

60 GI 227



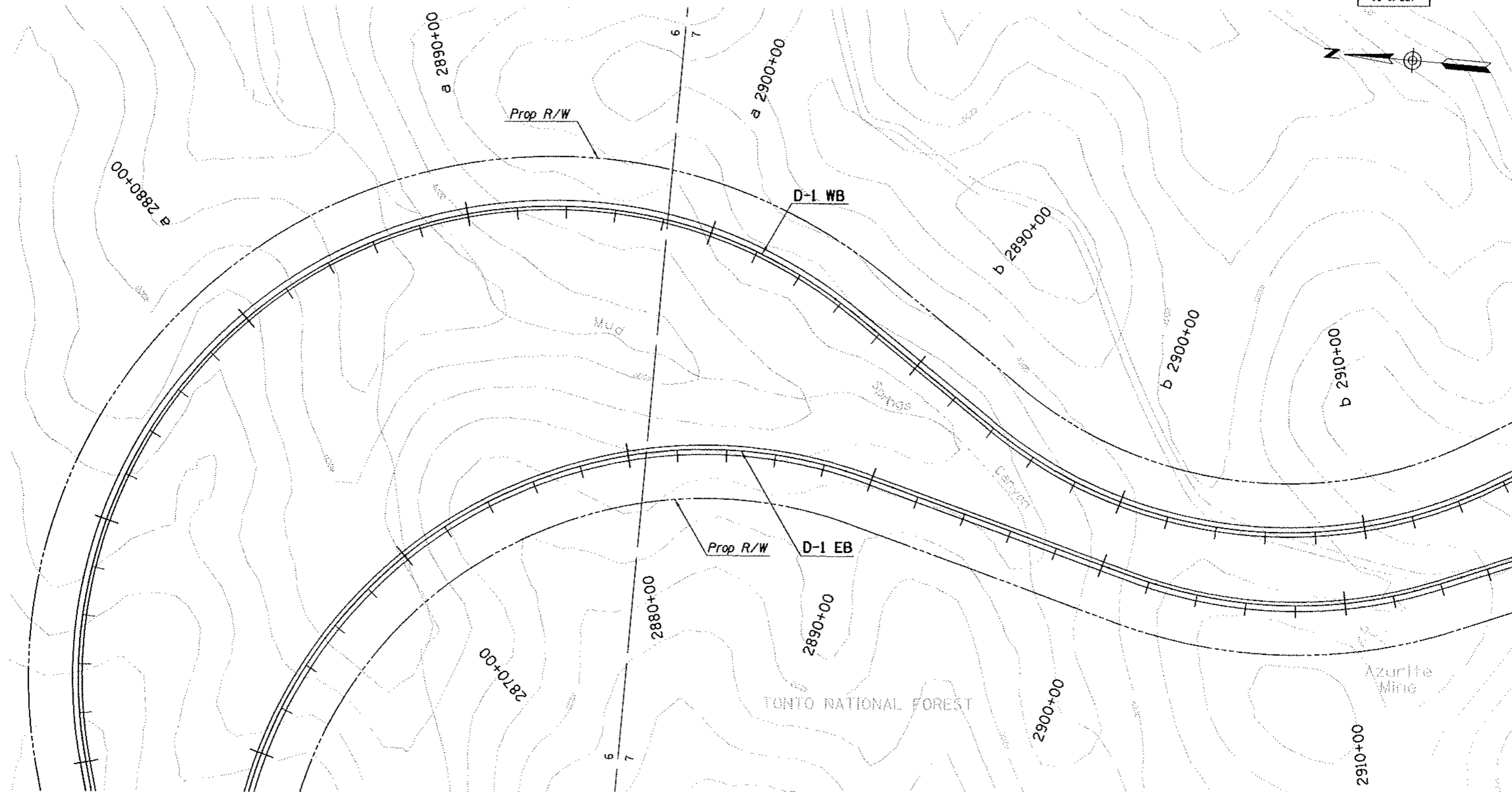
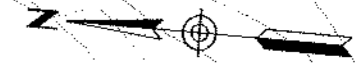
Plotted By: \*USER\* Date: 10-NOV-2004 17:45  
 File: P:\ARIZ\93000 US 60 Superior to Globe\800\ACQ\7823\VL\782300\A\2401-ar24.dgn

SHEET NO.	FINISHED PLANS	REVISIONS	LOCATION	DATE

DESIGN	NAME	DATE	ARIZONA DEPARTMENT OF TRANSPORTATION INTERMODAL TRANSPORTATION DIVISION	PRELIMINARY NOT FOR CONSTRUCTION OR RECORDING
DRAWN				
CHECKED			ALTERNATIVE D-1	
ROUTE	LOCATION		US 60 SUPERIOR - GLOBE	SHEET 4 OF 12
TRACS NO. H 5160 01 L				OF

F.H.R.A. REGION	STATE	PROJECT NO.	SHEET NO.	TOTAL SHEETS	AS BUILT
9	ARIZ.		11		

60 GI 227



Printed By: rUSER Date: 10-01-2004 17:46  
 File: P:\0419\3000 US 60 Superior to Globe\ROAD\01\02\CIVIL\ROAD\01\02.dgn

DATE	LOCATION	REVISIONS	DESIGNER

DESIGN	NAME	DATE	ARIZONA DEPARTMENT OF TRANSPORTATION INTERMODAL TRANSPORTATION DIVISION	PRELIMINARY NOT FOR CONSTRUCTION OR RECORDING
DRAWN				
CHECKED			ALTERNATIVE D-1	
ROUTE	LOCATION		US 60 SUPERIOR - GLOBE	SHEET 5 OF 12
TRACS NO. H 5160 01 L				OF